



Contact Heating Thermoforming Machine



Contact Heating Thermoforming Machine

The Sunwell SF (Shallow Former) model contact heating thermoforming machine makes a variety of thin gauge food containers from a wide range of materials such as BOPS, HIPS, PET, PP and PVC.

This SF model machine pulls sheet into the contact heating platen without a heat oven and chain index which saves energy and space. It also avoids sheet sagging in the oven and make the process easier. The top moving platen is driven by servo motor, linked to the mechanical toggle system to give a precise positioning and motion control. The fix bottom platen consists of four layers: the first section is the surface plate, which has thousands of tiny holes for air blow forming, the 2nd plate has flow channels for controlling the form air pressure, the 3rd plate has mounted heaters for heating the sheet and the 4th plate is insulated. There are multiple control zones matching the forming mold sizes, safety guards surrounding the forming area and a safety light curtain is mounted in the entrance and exit of the forming station. The air "on/off" switches are for the zoned area of air precision control in the bottom platen. Quick tool changes

make the production flexible and cost saving.

The formed sheet is gripped and transferred the predetermined length by the reciprocating timing belt driven system. It could conjugate with the cross flying cutter which cuts the whole web off then accumulates into the stacker. These stacked shots can be processed separately in an off-line trim press. A continuous on/off edge mark puncher makes a mark in the edge to identify the quantities easily for the stacks and off-line production. It is also available for in-line process with vertical trim press for mass production.

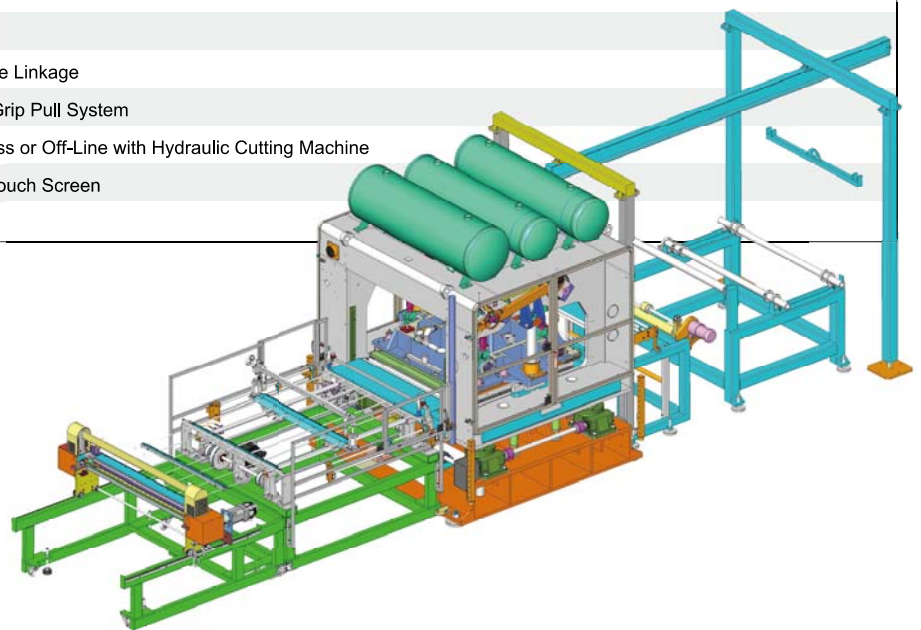
SF model thermoforming machine make it possible to provide thin gauge products the most suitable solution for the various shallow containers production needs in the food packaging industry.

**PARTNERS FOR
MAXIMUM PROFITABILITY**

Contact Heating Thermoforming Machine



MODEL	SF-1100
Configuration	Contact Heating Platen
Application	Shallow Containers for Thin Gauge Sheet of BOPS; HIPS; PET etc.
Forming Method	Vacuum/ Pressure Forming
Forming Direction	Upper Sheet Forming
Maximum Sheet Width	1,100 mm
Maximum Forming Area	1,050 x 1,050 mm
Minimum Forming Area	700 x 700 mm
Max. Depth of Draw	50 mm
Forming Tonnage	75 tons
Shut-height	55-150 mm
Platen Travel	150 mm
Max. Dry Cycle Speed	35 cycle/min
Top Platen Drive	AC Servo Driven Toggle Linkage
Sheet Index	AC Servo Driven with Grip Pull System
Products Cutting	Inline Vertical Trim Press or Off-Line with Hydraulic Cutting Machine
Control System	YASKAWA PLC with Touch Screen
Floor Space	8L x 2.5W x 3.5H M



Sunwell Taiwan

Add: No. 6-3 Taluen Road, Tatsun Hsiang,
Changhwa Hsien
Tel: +886-4-853-4810 Fax: +886-4-853-4847
E-mail: sales@sunwellweb.com.tw

Sunwell America

Add: Circunvalacion Norte 94, Las Fuentes
Zapopan, Jalisco, Mexico 45070
Tel: +52-33-3632-0821 Fax: +52-33-36317089
E-mail: hugoh@sunwellamericas.com

Sunwell UK

Tel: +31 615664817
E-mail: rene.derks@sunwell.co.uk
E-mail: sales@sunwell.co.uk

Sunwell Brazil

Add: Rua Joao Da Jori, 180, Cocal Do Sul,
Santa Catarina, Brazil. CEP 88450.000
Cel: +55-48-9641-7799
E-mail: vburato@sunwellbrazil.com

Sunwell USA

Add: 1601 West Pine Street, Union Gap,
WA, 98903, USA
Tel: +1-509-4544578 Fax: +1-509-4544598
E-mail: rmoore@tslusa.biz
sales@tslusa.biz

Sunwell India

Add: 332, Gaia Complex, Deen Dayal Upadhyay Marg,
Mulund (west), Mumbai - 400 080, India
Tel: +91-22-25606065 Cel: +91-98200-96065
E-mail: bipin@sunwellindia.com